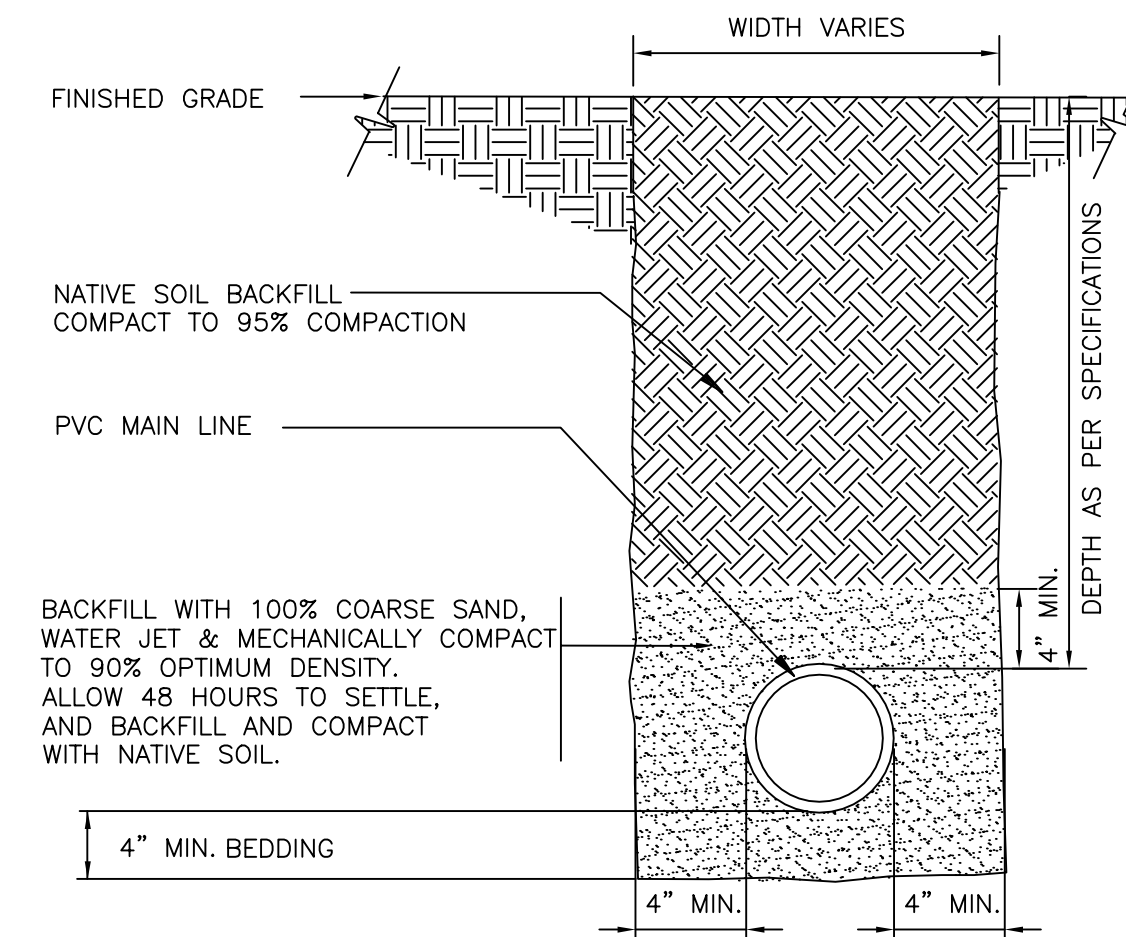
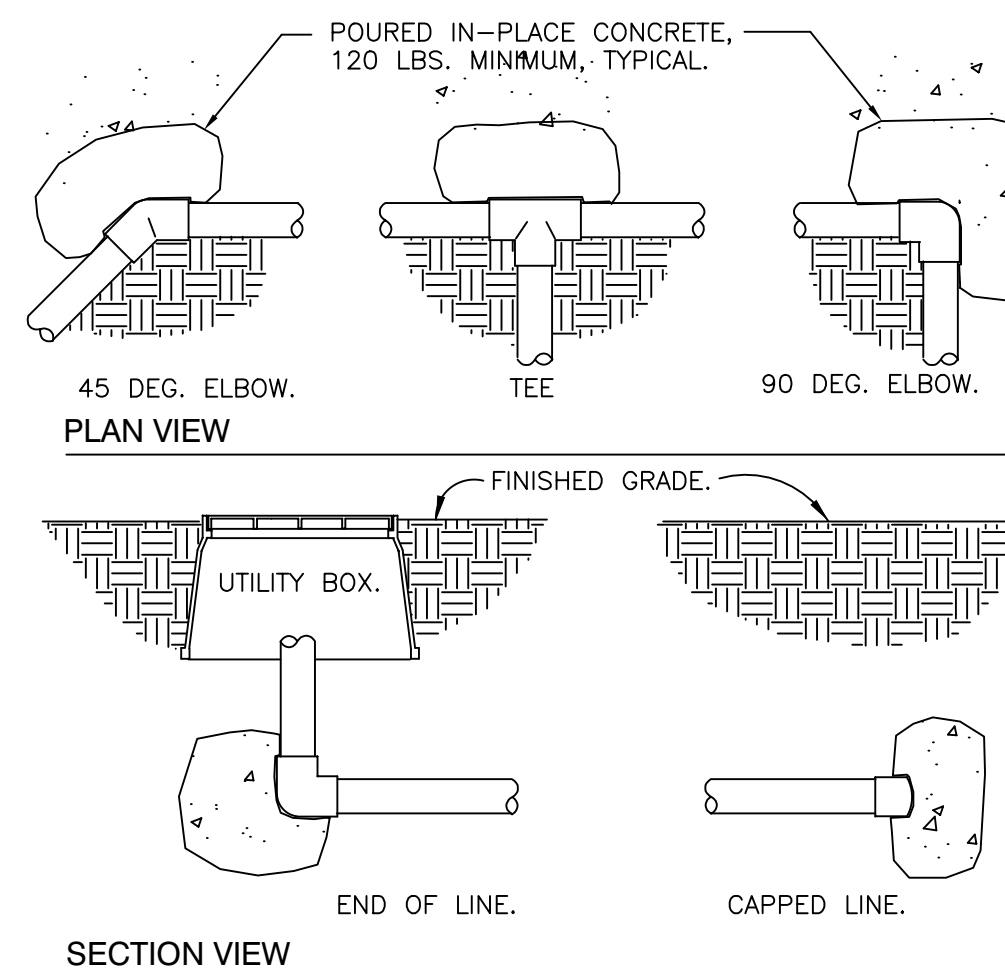
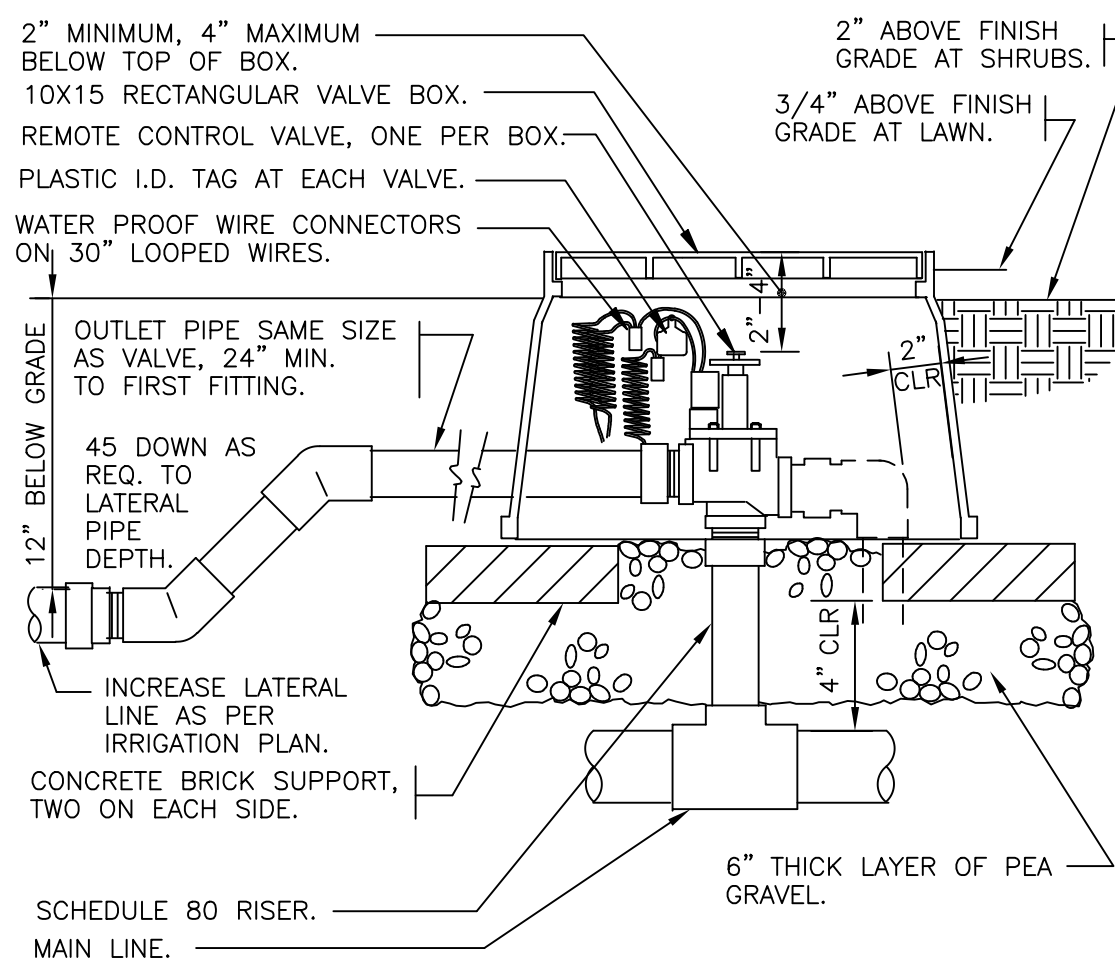
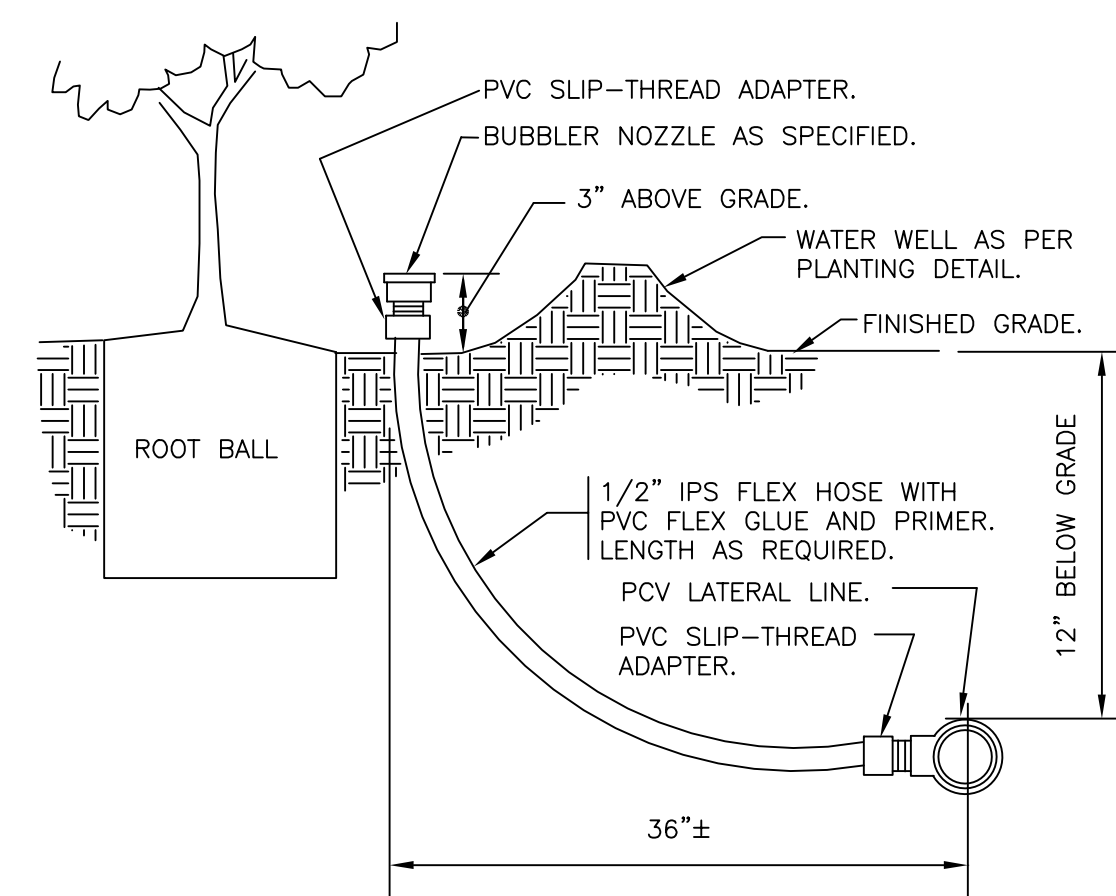
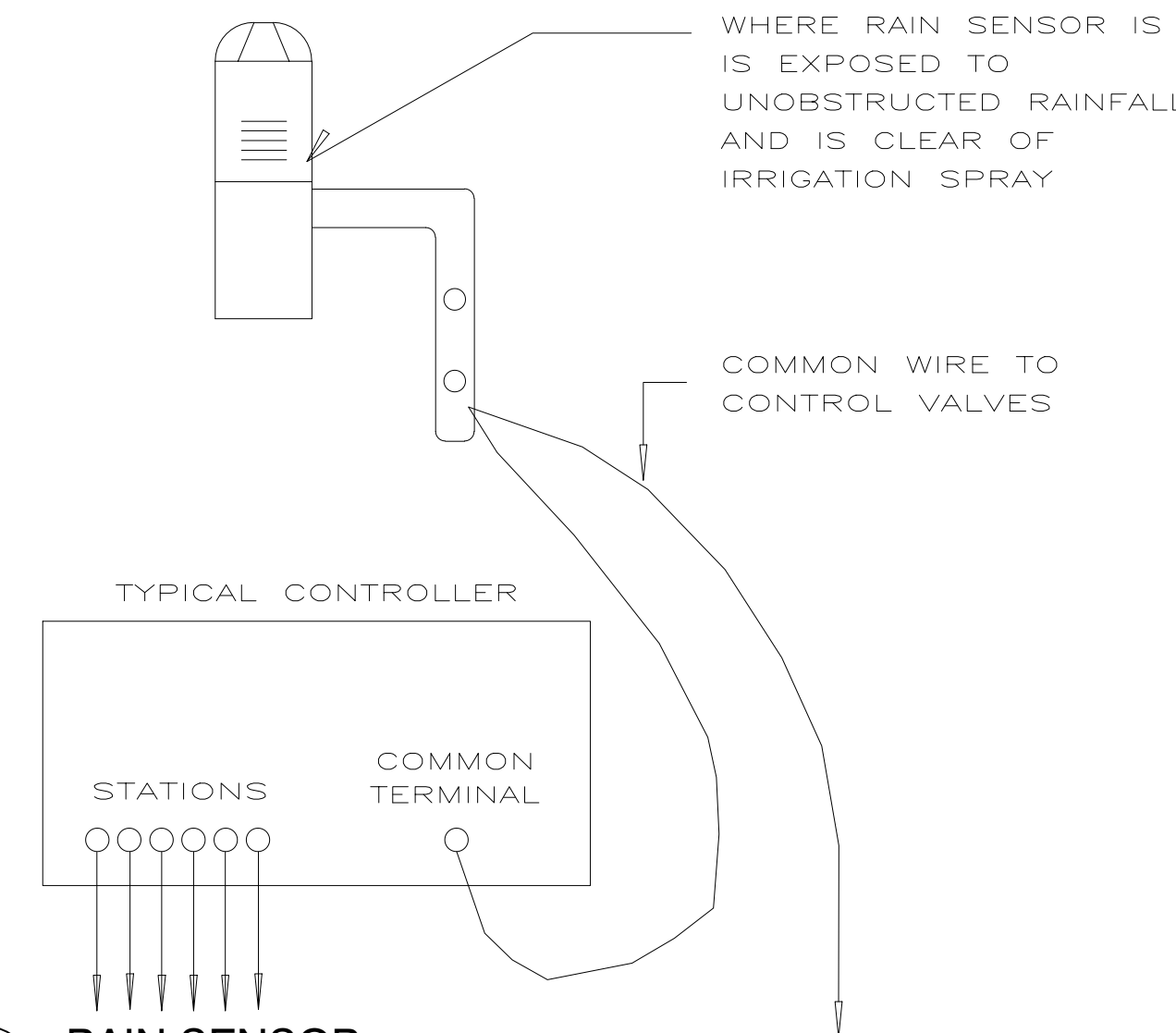
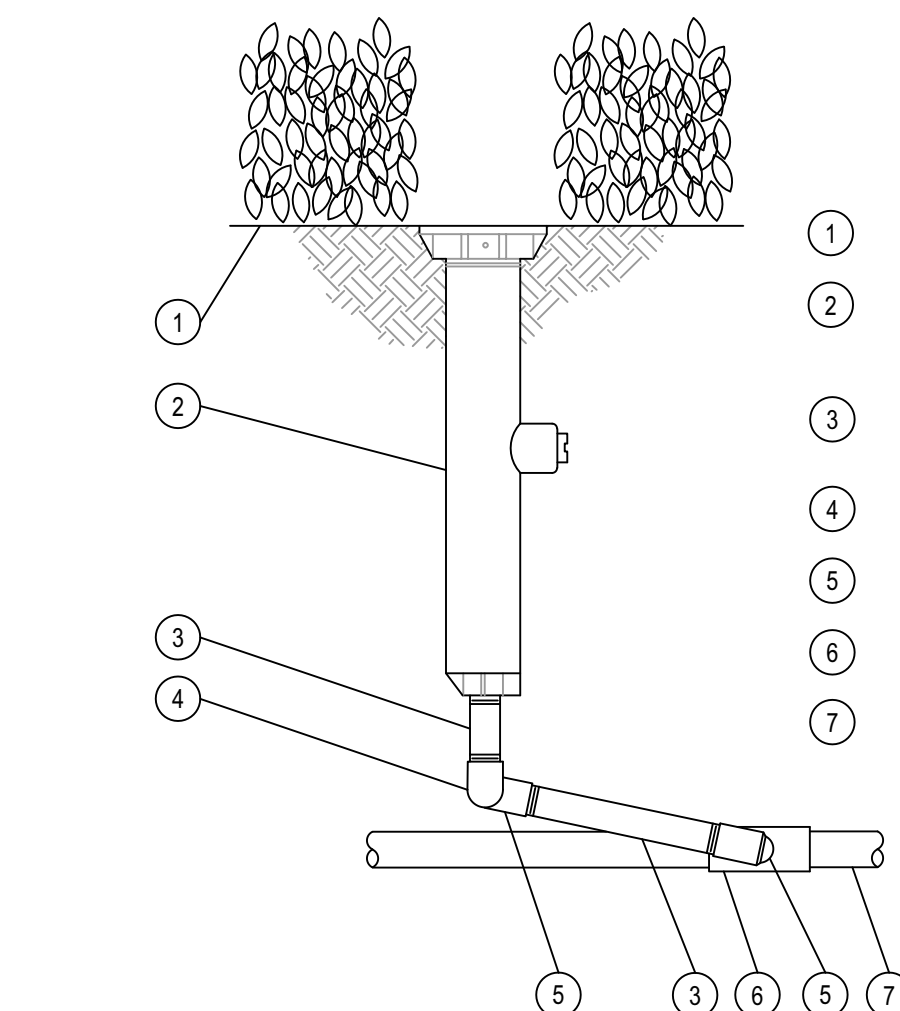
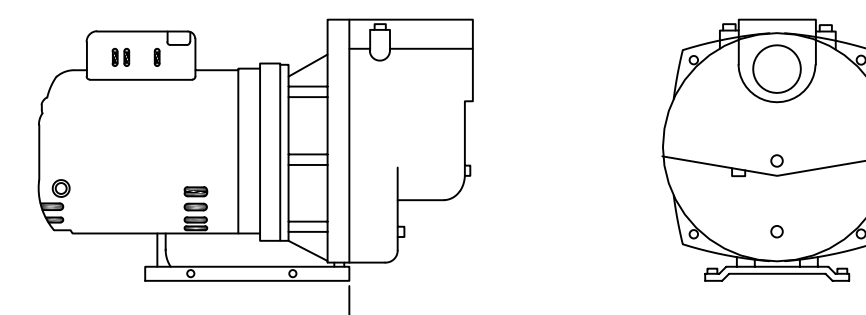
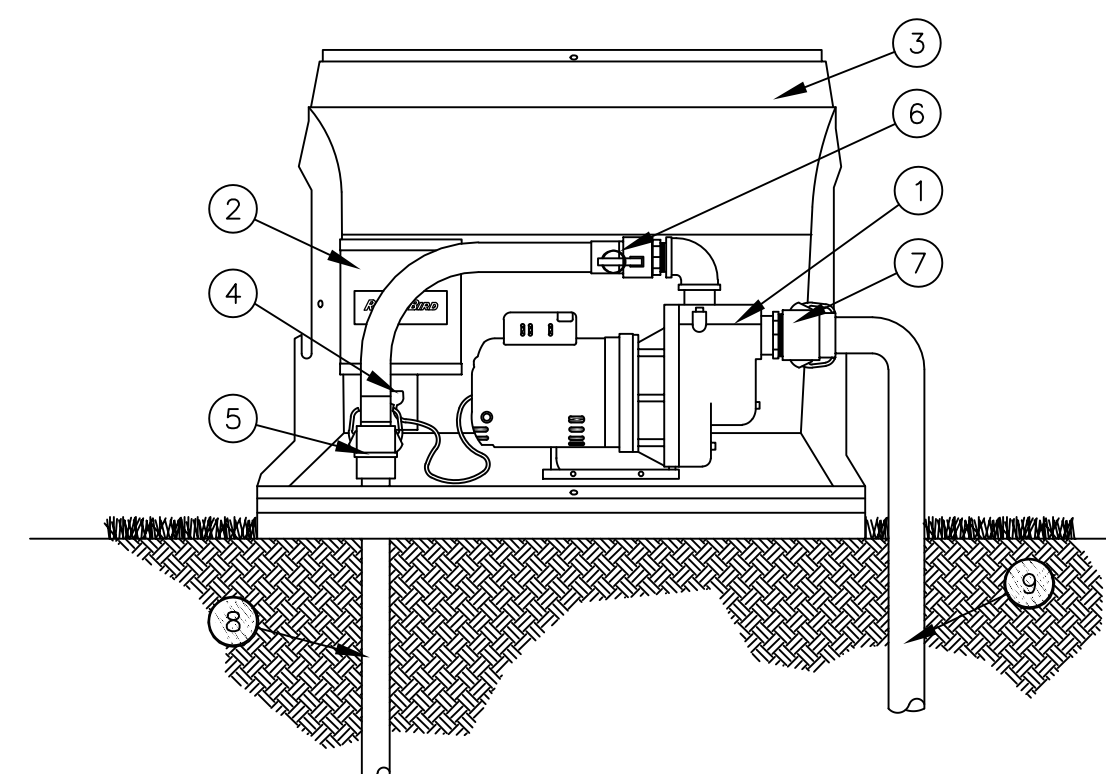
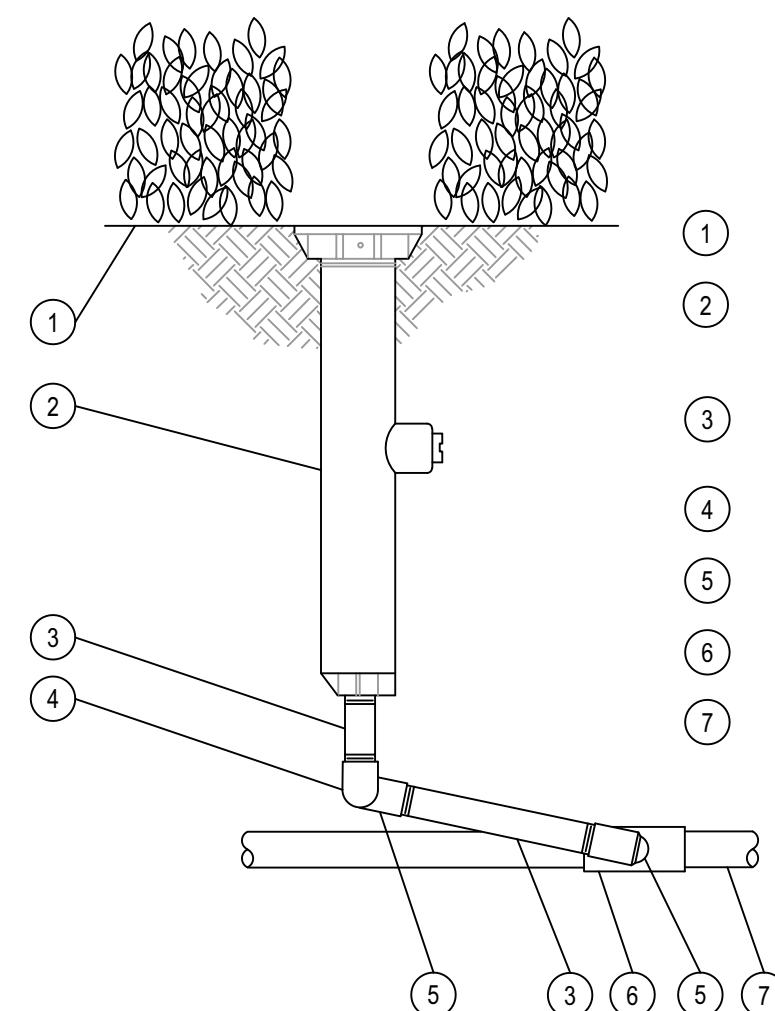


1. Pipe sizes shall conform to those shown on the drawings. No substitutions of smaller pipe sizes shall be permitted, but substitutions of larger sizes may be approved. All damaged and rejected pipe shall be removed from the site at the time of said rejection.
2. All mainline, lateral line and control wire conduit under paving shall be installed in separate sleeves. Sleeves shall be a minimum of twice (2X) the diameter of the pipe to be sleeved.
3. Install all backflow prevention devices and all piping between the point of connection and the backflow preventer as per local codes.
4. Final location of the backflow preventer and automatic controller shall be approved by the owner's authorized representative.
5. 120 VAC electrical power source at controller location shall be provided by others. The electrical contractor shall make the final connection from the electrical source to the controller.


$$1\ 1/2'' = 1'-0''$$

$$\frac{3}{4}'' = 1'-0''$$

$$1\ 1/2'' = 1'-0''$$

$$1 \frac{1}{2}'' = 1'-0''$$

$$3'' = 1'-0''$$


7



A side view of the device. Callout 10 points to the top surface of the main body. Callout 11 points to the bottom surface of the main body. Callout 12 points to the top surface of the upper housing. Callout 13 points to the side surface of the upper housing. Callout 14 points to the side surface of the lower housing. Callout 15 points to the bottom surface of the lower housing.

- ① 2-HP HEAVY DUTY PUMP
- ② PSR-P
- ③ CLAM SHELL POWDER COATED STEEL ENCLOSURE
- ④ 230 VOLT MAIN POWER PLUG WITH QUICK DISCONNECTING PIGGY-TAIL CORD
- ⑤ 1-1/2" PVC ADAPTER
- ⑥ QUICK DISCONNECTING COUPLING
- ⑦ QUICK DISCONNECTING COUPLING
- ⑧ 1-1/2" DISCHARGE LINE
- ⑨ 2" SUCTION LINE
- ⑩ COOLING LOUVRES
- ⑪ PADLOCK HASP
- ⑫ ENCLOSURE TOP COVER
- ⑬ INTAKE/DISCHARGE HOLE (BOTH SIDES)
- ⑭ ø1" KNOCK OUT FOR 3/4" CONDUITS (BOTH SIDES)
- ⑮ ENCLOSURE BASE



Know what's **below**.
Call before you dig.

JESSAMINE
DESIGN BUILD
5427 OAK TERRACE DRIVE
ORLANDO, FL 32839
(508) 736-6857
steve@jessaminedb.com

steve@jessaminedb.com

PZ21-12000028

7/21/2021

urbana

950 Peninsula Corporate Circle,
Suite 1017
Boca Raton, FL 33487
info@urbanafil.com
www@urbanafil.com
561 299 0508

RDG
RDG Development Group

ST PHILIP CHURCH
IRRIGATION DETAILS
2505 NW 3RD ST
POMPANO BEACH, FL

Stephen M. Feccia, PLA
2021.06.15
19:58:21
-04'00'

STEPHEN M FECCIA, PLA
LA 6667289

DESIGNED _____
DRAWN _____
APPROVED _____
JOB NUMBER _____
DATE _____
REVISIONS _____



North
Scale: 1" = 20'

Scale: 1" = 20'

0' 10' 20' 40'

Diagram illustrating the cross-section of a foundation system, showing a wall, footing, and pile. The scale is 1" = 20'. The dimensions are marked as 0', 10', 20', and 40'.



JESSAMINE
DESIGN BUILD
5427 OAK TERRACE DRIVE
ORLANDO, FL 32839
(508) 736-6857
steve@jessaminedb.com

steve@jessaminedb.com